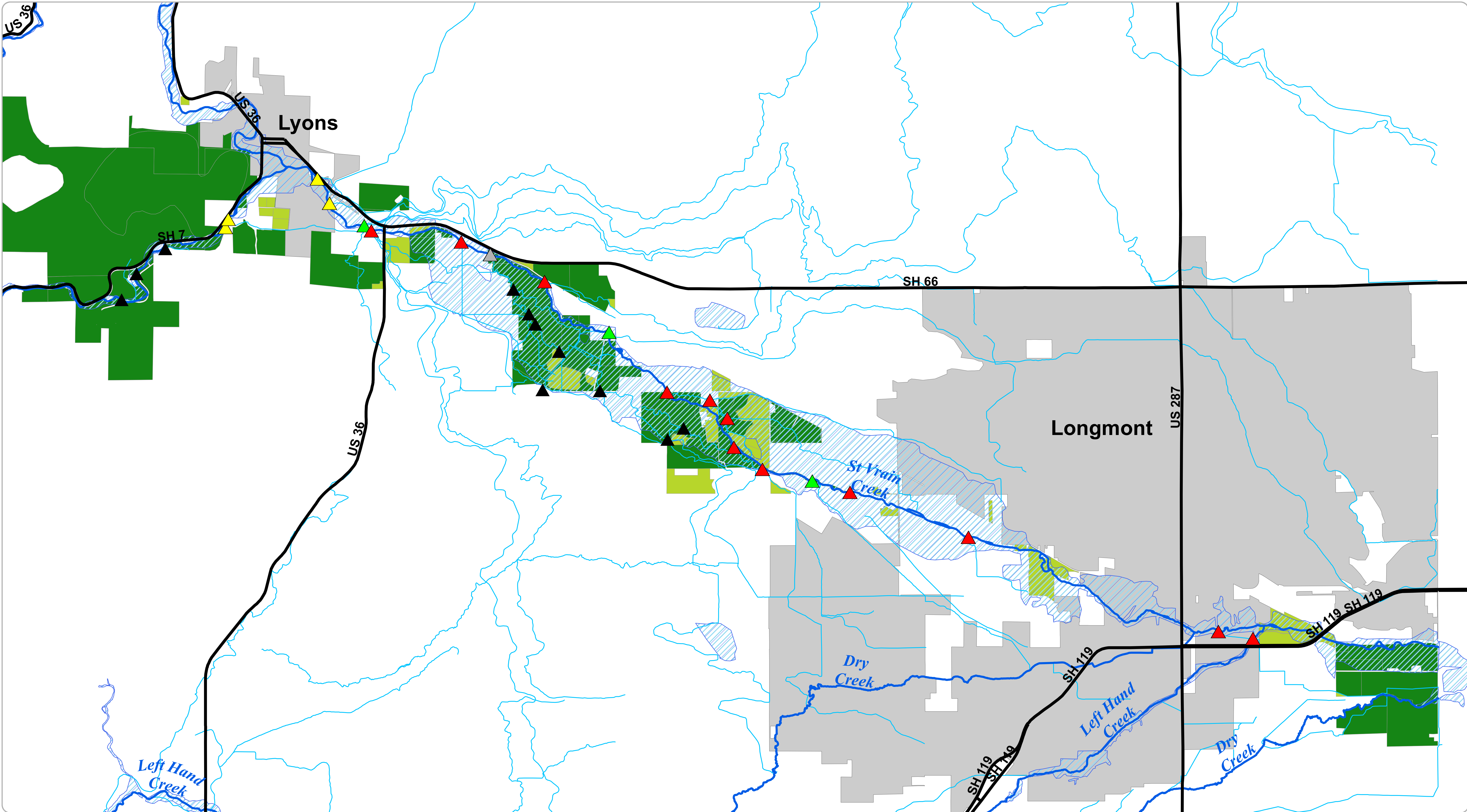


Diversion Structures Along St. Vrain Creek - Status on Inclusion of Fish Passage



2014	Diversion Structures	Rebuilding - fish passage possible	Rebuilding - no fish passage	Boulder County Open Space	Federal and State Hwy	BOCO Flood 2013 Inundated Area
	Rebuilding - incorporating fish passage	No flood damage - Fish passage incorporated	County Conservation Easement	Major Rd	Municipalities	
	Fish passage not relevant	Medium Rd				

DISCLAIMER: This map is a DRAFT and represents information collected in April 2014. The names of the diversion owners are intentionally left off of the map, so that the audience is instead focused on the successes, challenges and opportunities. If you have any questions or corrections, please contact St. Vrain and Left Hand Water Conservancy District.

This map is for illustrative purposes only and the features depicted on it are approximate. No warranties are made regarding the accuracy, completeness, reliability, or suitability of this map. In accessing and/or relying on this map, the user fully assumes any and all risk associated with the information contained therein.

